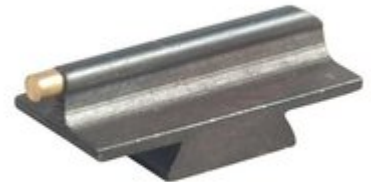


# RIFLE BEAD 1/16" NARROW FRONT SIGHT - .250" BEAD 1/16" MEDIUM FRONT SIGHT BRASS GOLD

[Rifle Parts](#) > [Sights](#) > [Front Sights](#)

## All-Metal Beads For Ramps & Dovetailed Barrels

Thin, streamlined, almost invisible blade with a machined bead gives a crisp, highly visible sight picture.



## Attributes

- Name: [.250" BEAD 1/16" MEDIUM FRONT SIGHT BRASS GOLD](#)
- Manufacturer: [WILLIAMS GUN SIGHT](#)
- Product no.: 962161251
- Mfr. No.: 001645
- Color: Gold
- Height: .250
- Make: Universal Rifles
- Material: Brass
- Style: Bead
- Delivery weight: 0.005kg
- Shipping width: 83mm
- Shipping length: 146mm
- UPC: 053506016457

## Item details

Made in USA

# Table of Contents

- [Startpage](#)
- [Safety Instruction Guide for RIFLE BEAD 1/16" NARROW FRONT SIGHT](#)
- [About Us](#)

# Safety Instruction Guide for RIFLE BEAD 1/16" NARROW FRONT SIGHT

## Introduction

Thank you for choosing the RIFLE BEAD 1/16" NARROW FRONT SIGHT. This guide provides essential safety instructions to ensure the safe use and installation of your product. Please read these instructions carefully before use.

## General Safety Guidelines

- Ensure the product is suitable for your specific firearm model before installation.
- Always handle firearms with care and follow all safety protocols.
- Keep the product out of reach of children and unauthorized users.
- Regularly inspect the sight for any signs of wear or damage before each use.
- If you notice any irregularities, discontinue use immediately and consult a professional.

## Specific Safety Precautions for Use

- Use only with compatible firearms as specified by the manufacturer.
- Avoid using the sight in adverse weather conditions that may impair visibility.
- Do not modify the sight in any way, as this may compromise safety and functionality.
- Always wear appropriate eye protection while handling firearms.
- Ensure the firearm is unloaded before installing or adjusting the sight.

## Instructions for Installation and Usage

### 1. Installation:

- Ensure the firearm is unloaded.
- Identify the dovetail slot on your firearm where the sight will be installed.
- Align the sight with the dovetail slot, ensuring a snug fit.
- Use a hammer and a brass punch to gently tap the sight into place if necessary.
- Ensure the sight is secured and does not move under pressure.

### 2. Usage:

- When aiming, ensure that your eye is aligned with the bead for optimal sight picture.
- Adjust your stance and grip to maintain stability while aiming.
- Practice regularly to become familiar with the sight's alignment and accuracy.

## Disposal Instructions

- Dispose of the product in accordance with local regulations.
- Do not dispose of the sight in regular household waste.
- If the product is damaged or no longer usable, contact your local waste management authority for proper disposal methods.

## Contact Information for Further Support

For any inquiries or concerns regarding the RIFLE BEAD 1/16" NARROW FRONT SIGHT, please refer to the manufacturer's contact information included in the product packaging.

Thank you for your attention to these safety guidelines. By following these instructions, you can ensure a safe and effective shooting experience with your new front sight.

# About Us

## Brownells Austria

**Brownells - World's Largest Supplier of Gun Parts, Gunsmith Tools & Shooting Accessories**

[www.brownells.at](http://www.brownells.at)