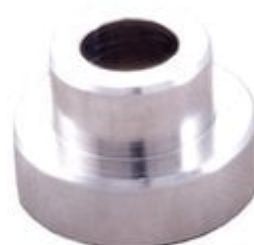


LOCK-N-LOAD COMPARATOR INSERT - 22 CALIBER BULLET COMPARATOR INSERT

[Reloading](#) > [Measuring Tools](#) > [Bullet Comparators](#)

The Stoney Point Chamber-All Bullet Comparator body attaches to the blade of your caliper with a small thumbscrew and utilizes inserts for each caliber. The design of this tool allows proper alignment when used with the stoney Point Chamber-All OAL gauge (offset position), or it can be used in a conventional centerline method. Inserts are sold separately, or the tool can be purchased with six inserts as a kit. The body can also be used with to hold the Stoney Point headspace gage inserts.



Attributes

- Name: [22 CALIBER BULLET COMPARATOR INSERT](#)
- Manufacturer: [HORNADY](#)
- Product no.: 749000524
- Mfr. No.: 222
- Caliber: 22 Caliber (.223-.224)
- Delivery weight: 0.045kg
- Shipping height: 19mm
- Shipping width: 50mm
- Shipping length: 80mm
- UPC: 090255704358

Item details

Made in USA

Table of Contents

- [Startpage](#)
- [LOCKNLOAD COMPARATOR INSERT 22 CALIBER BULLET COMPARATOR INSERT Safety Instruction Guide](#)
- [About Us](#)

LOCKNLOAD COMPARATOR INSERT 22 CALIBER BULLET COMPARATOR INSERT Safety Instruction Guide

Introduction

Thank you for choosing the LOCKNLOAD COMPARATOR INSERT 22 CALIBER BULLET COMPARATOR INSERT. This guide provides essential safety information and instructions for the proper use of this product. Please read all sections carefully to ensure safe and effective operation.

General Safety Guidelines

- Always follow the manufacturer's instructions for use.
- Ensure that the product is used in a safe environment, free from distractions.
- Keep the product out of reach of children and vulnerable individuals.
- Regularly inspect the product for any signs of damage or wear.
- Report any unsafe conditions or accidents to the appropriate authorities.
- Stay informed about product recalls by checking the EU's Safety Gate platform.

Specific Safety Precautions for Use

- Use the comparator insert only with compatible calibers as specified (22 Caliber .223.224).
- Ensure that the comparator body is securely attached to the caliper before use.
- Do not modify the product or use it for unintended purposes.
- Handle all components with care to avoid injury.
- Avoid direct contact with sharp edges or moving parts.
- Always wear appropriate safety gear, such as eye protection, when using this product.

Instructions for Installation and Usage

1. Installation

- Attach the comparator body to the blade of your caliper using the small thumbscrew.
- Ensure that the attachment is secure before proceeding.
- Select the appropriate insert for the caliber you are measuring (sold separately or as a kit).
- If using the Stoney Point headspace gage inserts, ensure compatibility before installation.

2. Usage

- For proper alignment, use the comparator in conjunction with the Stoney Point ChamberAll OAL gauge in the offset position.
- Alternatively, you can use the comparator in a conventional centerline method.
- Always doublecheck that the insert is correctly positioned before taking measurements.
- After use, detach the comparator body and store it in a safe place.

Disposal Instructions

- Dispose of the product in accordance with local regulations.
- If the product is no longer usable, consider recycling components where possible.
- Do not dispose of the product in general waste if it contains hazardous materials.

Contact Information for Further Support

For further support or inquiries regarding safety concerns or product information, please refer to the manufacturer's contact details provided with your product packaging.

By following these guidelines, you can ensure safe and effective use of the LOCKNLOAD COMPARATOR INSERT 22 CALIBER BULLET COMPARATOR INSERT. Thank you for prioritizing safety.

About Us

Brownells Česká republika

Brownells - World's Largest Supplier of Gun Parts, Gunsmith Tools & Shooting Accessories

www.brownells.cz