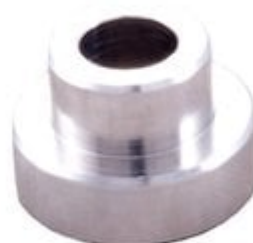


LOCK-N-LOAD COMPARATOR INSERT - 30 CALIBER BULLET COMPARATOR INSERT

[Reloading](#) > [Measuring Tools](#) > [Bullet Comparators](#)

The Stoney Point Chamber-All Bullet Comparator body attaches to the blade of your caliper with a small thumbscrew and utilizes inserts for each caliber. The design of this tool allows proper alignment when used with the stoney Point Chamber-All OAL gauge (offset position), or it can be used in a conventional centerline method. Inserts are sold separately, or the tool can be purchased with six inserts as a kit. The body can also be used with to hold the Stoney Point headspace gage inserts.



Attributes

- Name: [30 CALIBER BULLET COMPARATOR INSERT](#)
- Manufacturer: [HORNADY](#)
- Product no.: 749000519
- Mfr. No.: 830
- Caliber: 30 Caliber (.308)
- Delivery weight: 0.032kg
- Shipping height: 15mm
- Shipping width: 46mm
- Shipping length: 76mm
- UPC: 090255704464

Item details

Made in USA

Table of Contents

- [Startpage](#)
- [LOCKNLOAD COMPARATOR INSERT 30 CALIBER BULLET COMPARATOR INSERT Safety Instructions](#)
- [About Us](#)

LOCKNLOAD COMPARATOR INSERT 30 CALIBER BULLET COMPARATOR INSERT Safety Instructions

Introduction

Thank you for choosing the LOCKNLOAD COMPARATOR INSERT 30 CALIBER BULLET COMPARATOR INSERT. This product is designed to assist in measuring bullet lengths accurately and safely. Please read this safety instruction guide carefully to ensure safe and effective use of the product.

General Safety Guidelines

- Ensure that the product is used in accordance with the manufacturer's instructions.
- Keep the product out of reach of children and vulnerable individuals.
- Inspect the product for damage before each use. Do not use if damaged.
- Use the product only for its intended purpose as described in the manual.
- Report any unsafe products or accidents to the relevant authorities.
- Check for recall updates on the EU's Safety Gate platform to stay informed about product safety.

Specific Safety Precautions for Use

- Always handle the comparator with care to avoid injury.
- Ensure that the comparator is securely attached to the caliper before use.
- Do not exceed the recommended measurement limits specified for this product.
- Use inserts that are specifically designed for the caliber you are measuring.
- Avoid using the comparator in wet or damp conditions.
- Store the comparator in a dry place when not in use to prevent rust or damage.

Instructions for Installation and Usage

1. Attaching the Comparator:

- Locate the small thumbscrew on the body of the comparator.
- Align the comparator blade with the caliper blade.
- Tighten the thumbscrew to secure the comparator in place.

2. Using the Comparator:

- Select the appropriate caliber insert for your measurement.
- Insert the caliber insert into the comparator body.
- Position the bullet in the comparator and align it as per the instructions.
- Take the measurement using the caliper, ensuring that the bullet is properly aligned.

3. Removing the Comparator:

- Loosen the thumbscrew to detach the comparator from the caliper.
- Carefully remove the comparator and insert from the caliper.

Disposal Instructions

- Dispose of the product in accordance with local regulations.
- Do not dispose of the product in household waste.
- Consider recycling options if available.

Contact Information for Further Support

For further support or inquiries regarding safety, please refer to the manufacturer's contact details provided with the product packaging or visit their official website.

By following these safety instructions, you can ensure the safe and effective use of the LOCKNLOAD COMPARATOR INSERT 30 CALIBER BULLET COMPARATOR INSERT. Thank you for your attention to safety and for choosing our product.

About Us

Brownells Česká republika

Brownells - World's Largest Supplier of Gun Parts, Gunsmith Tools & Shooting Accessories

www.brownells.cz