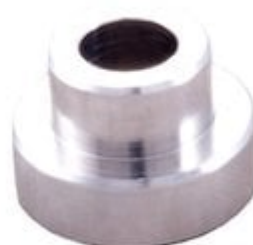


LOCK-N-LOAD COMPARATOR INSERT - 6.5MM BULLET COMPARATOR INSERT

[Reloading](#) > [Measuring Tools](#) > [Bullet Comparators](#)

The Stoney Point Chamber-All Bullet Comparator body attaches to the blade of your caliper with a small thumbscrew and utilizes inserts for each caliber. The design of this tool allows proper alignment when used with the stoney Point Chamber-All OAL gauge (offset position), or it can be used in a conventional centerline method. Inserts are sold separately, or the tool can be purchased with six inserts as a kit. The body can also be used with to hold the Stoney Point headspace gage inserts.



Attributes

- Name: [6.5MM BULLET COMPARATOR INSERT](#)
- Manufacturer: [HORNADY](#)
- Product no.: 749000517
- Mfr. No.: 526
- Caliber: 264/6.5 mm (.264)
- Delivery weight: 0.032kg
- Shipping height: 15mm
- Shipping width: 41mm
- Shipping length: 76mm
- UPC: 090255704242

Item details

Made in USA

Table of Contents

- [Startpage](#)
- [LOCKNLOAD COMPARATOR INSERT 6.5MM BULLET COMPARATOR INSERT Safety Instruction Guide](#)
- [About Us](#)

LOCKNLOAD COMPARATOR INSERT 6.5MM BULLET COMPARATOR INSERT Safety Instruction Guide

Introduction

Thank you for purchasing the LOCKNLOAD COMPARATOR INSERT 6.5MM BULLET COMPARATOR INSERT. This product is designed to enhance your reloading experience by providing accurate measurements for bullet seating depth. It is important to read and understand these safety instructions to ensure safe and effective use of the product.

General Safety Guidelines

- **Product Safety:** This product is designed for safe use. Follow all instructions to minimize risks.
- **Enhanced Recalls:** In the event of a safety issue, recall notices will be provided. Stay informed about any updates regarding this product.
- **Online Shopping:** Ensure that when purchasing online, the seller meets all safety requirements.
- **Special Consumer Focus:** Extra precautions should be taken when this product is used around children. Keep all components out of reach of children.
- **EU Contact Point:** For any safety inquiries, refer to the designated EU-based contact for assistance.
- **Rapid Alerts:** Stay updated on any safety alerts related to this product via the EU's Safety Gate platform.

Specific Safety Precautions for Use

- **Read Instructions:** Always read and understand the instructions before using the product.
- **Inspect Before Use:** Check the comparator insert for any damage or defects before use. Do not use if damaged.
- **Use Appropriate Calibers:** Ensure that you are using the correct caliber inserts for your specific needs.
- **Avoid Force:** Do not force the tool during measurements. Apply gentle pressure to avoid damaging the comparator or caliper.
- **Keep Away from Children:** This product should be used by adults only. Keep all components out of the reach of children.
- **Wear Protective Gear:** Consider using safety glasses and gloves when handling ammunition and reloading equipment.

Instructions for Installation and Usage

Installation

1. **Attach the Body:** Securely attach the body of the LOCKNLOAD COMPARATOR INSERT to the blade of your caliper using the small thumbscrew.
2. **Insert the Comparator:** Choose the appropriate caliber insert and securely place it into the body of the comparator.

Usage

1. **Align the Tool:** Properly align the comparator when using it with the Stoney Point Chamber All OAL gauge or in a conventional centerline method.
2. **Measure Bullet Depth:**
 - Place the bullet in the comparator insert.
 - Gently close the caliper until it makes contact with the bullet.
 - Read the measurement displayed on the caliper.
3. **Record Measurements:** Keep a record of your measurements for future reference and adjustments.

Maintenance

- **Clean After Use:** Wipe the comparator and inserts with a soft, dry cloth after each use to remove any debris or residue.
- **Store Safely:** Store the comparator and inserts in a safe, dry place away from moisture and extreme temperatures.

Disposal Instructions

- **Environmental Considerations:** Dispose of the product in accordance with local regulations. Do not dispose of in regular household waste.
- **Recycling:** If possible, recycle components of the product to minimize environmental impact.

Contact Information for Further Support

For any questions or concerns regarding the LOCKNLOAD COMPARATOR INSERT 6.5MM BULLET COMPARATOR INSERT, please refer to the designated support channels provided by the manufacturer. Ensure you have your purchase information available for reference.

By following these safety guidelines and instructions, you will ensure the safe and effective use of your LOCKNLOAD COMPARATOR INSERT 6.5MM BULLET COMPARATOR INSERT. Thank you for your attention to safety and enjoy your reloading experience!

About Us

Brownells Česká republika

Brownells - World's Largest Supplier of Gun Parts, Gunsmith Tools & Shooting Accessories

www.brownells.cz