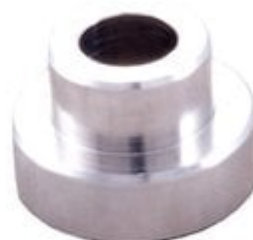


LOCK-N-LOAD COMPARATOR INSERT - 338 CALIBER BULLET COMPARATOR INSERT

[Reloading](#) > [Measuring Tools](#) > [Bullet Comparators](#)

The Stoney Point Chamber-All Bullet Comparator body attaches to the blade of your caliper with a small thumbscrew and utilizes inserts for each caliber. The design of this tool allows proper alignment when used with the stoney Point Chamber-All OAL gauge (offset position), or it can be used in a conventional centerline method. Inserts are sold separately, or the tool can be purchased with six inserts as a kit. The body can also be used with to hold the Stoney Point headspace gage inserts.



Attributes

- Name: [338 CALIBER BULLET COMPARATOR INSERT](#)
- Manufacturer: [HORNADY](#)
- Product no.: 749000512
- Mfr. No.: 933
- Caliber: 338 Caliber (.338)
- Delivery weight: 0.032kg
- Shipping height: 13mm
- Shipping width: 48mm
- Shipping length: 74mm
- UPC: 090255704488

Item details

Made in USA

Table of Contents

- [Startpage](#)
- [LOCKNLOAD COMPARATOR INSERT 338 CALIBER BULLET COMPARATOR INSERT Safety Instructions](#)
- [About Us](#)

LOCKNLOAD COMPARATOR INSERT 338 CALIBER BULLET COMPARATOR INSERT Safety Instructions

Introduction

Thank you for choosing the LOCKNLOAD COMPARATOR INSERT 338 CALIBER BULLET COMPARATOR INSERT. This product is designed to assist in measuring bullet lengths accurately when reloading ammunition. To ensure safe and effective use, please read this safety instruction guide carefully.

General Safety Guidelines

- Ensure safe use of the product according to the guidelines provided.
- Be aware of potential risks associated with the product, including improper handling and use.
- Always follow the manufacturer's instructions for use and maintenance.
- Keep this product out of reach of children and vulnerable individuals.
- Report any unsafe products or incidents to the appropriate authorities.
- Stay informed about product recalls via the EU's Safety Gate platform.

Specific Safety Precautions for Use

- Always inspect the product for any signs of damage before use. Do not use if damaged.
- Use the product only for its intended purpose as described in this manual.
- When using the bullet comparator, ensure it is securely attached to the caliper to prevent slips or accidents.
- Avoid placing fingers near moving parts when adjusting the comparator.
- Use caution when handling ammunition components to prevent accidental discharge.
- Store the product in a safe and dry location when not in use.

Instructions for Installation and Usage

Installation

1. Attach the Comparator Body:

- Use the small thumbscrew to securely attach the comparator body to the blade of your caliper.
- Ensure the attachment is tight to prevent movement during use.

2. Insert Selection:

- Choose the appropriate caliber insert for your measurements (sold separately or as a kit).
- Insert the chosen caliber into the comparator body.

Usage

1. Align the Comparator:

- For use with the Stoney Point ChamberAll OAL gauge, position the tool in the offset position for proper alignment.
- Alternatively, you can use a conventional centerline method for alignment.

2. Measure Bullet Lengths:

- Place the bullet into the comparator and read the measurement on the caliper.

- Ensure that the bullet is held securely in place during measurement to avoid inaccuracies.

3. Using Headspace Gage Inserts:

- The body can also accommodate Stoney Point headspace gage inserts for additional measurements.
- Follow the same installation and usage instructions as above.

Disposal Instructions

- Dispose of the product in accordance with local regulations regarding electronic and nonfood product waste.
- Do not dispose of the product in regular household waste.
- Consider recycling options where available.

Contact Information for Further Support

For any inquiries regarding safety or product issues, please refer to the manufacturer's contact information provided with your product packaging or visit the manufacturer's website.

By adhering to these safety instructions, you can ensure a safe and effective experience with your LOCKNLOAD COMPARATOR INSERT 338 CALIBER BULLET COMPARATOR INSERT. Thank you for your attention to safety.

About Us

Brownells Switzerland

Brownells Switzerland

www.brownells.ch