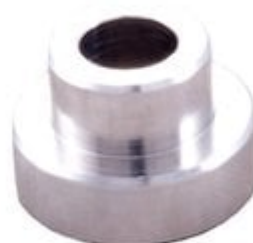


# LOCK-N-LOAD COMPARATOR INSERT - 25 CALIBER BULLET COMPARATOR INSERT

[Reloading](#) > [Measuring Tools](#) > [Bullet Comparators](#)

The Stoney Point Chamber-All Bullet Comparator body attaches to the blade of your caliper with a small thumbscrew and utilizes inserts for each caliber. The design of this tool allows proper alignment when used with the stoney Point Chamber-All OAL gauge (offset position), or it can be used in a conventional centerline method. Inserts are sold separately, or the tool can be purchased with six inserts as a kit. The body can also be used with to hold the Stoney Point headspace gage inserts.



## Attributes

- Name: [25 CALIBER BULLET COMPARATOR INSERT](#)
- Manufacturer: [HORNADY](#)
- Product no.: 749000511
- Mfr. No.: 425
- Caliber: 25 Caliber (.257)
- Delivery weight: 0.032kg
- Shipping height: 15mm
- Shipping width: 46mm
- Shipping length: 76mm
- UPC: 090255704228

## Item details

Made in USA

# Table of Contents

- [Startpage](#)
- [LOCKNLOAD COMPARATOR INSERT 25 CALIBER BULLET COMPARATOR INSERT Safety Instructions](#)
- [About Us](#)

# LOCKNLOAD COMPARATOR INSERT 25 CALIBER BULLET COMPARATOR INSERT Safety Instructions

## Introduction

Thank you for choosing the LOCKNLOAD COMPARATOR INSERT 25 CALIBER BULLET COMPARATOR INSERT. This product is designed to help you accurately measure bullet lengths and ensure proper alignment for reloading. Please read this safety instruction guide carefully to understand how to use the product safely and effectively.

## General Safety Guidelines

- Ensure the product is used in accordance with the manufacturer's instructions.
- Keep the product out of reach of children and vulnerable individuals.
- Regularly check for any signs of wear or damage before use.
- Always store the product in a safe and dry place when not in use.
- Report any unsafe products or accidents to the relevant authorities.

## Specific Safety Precautions for Use

- Only use the comparator insert with compatible calibers as specified.
- Do not apply excessive force when tightening the thumbscrew to avoid damaging the tool.
- Ensure that the caliper is properly calibrated before use.
- Avoid using the comparator insert in wet or damp conditions to prevent corrosion.
- Wear appropriate eye protection when working with firearms and ammunition.

## Instructions for Installation and Usage

### 1. Installation of Comparator Insert

- Select the appropriate caliber insert for your needs.
- Align the insert with the body of the comparator.
- Secure the insert in place by tightening the thumbscrew gently.

### 2. Using the Comparator

- Attach the comparator body to the blade of your caliper using the thumbscrew.
- For use with the Stoney Point ChamberAll OAL gauge, ensure it is set to the offset position.
- Measure the bullet length by placing the bullet against the comparator insert and reading the measurement from the caliper.
- For conventional centerline measuring, ensure the bullet is aligned with the centerline of the comparator.

### 3. PostUse Care

- Clean the comparator and insert after each use to maintain accuracy and prevent buildup of debris.
- Store the comparator and inserts in a protective case to avoid damage.

## Disposal Instructions

- Dispose of the product in accordance with local regulations regarding electronic and nonfood product waste.
- Do not dispose of the product in regular household waste. Instead, seek out designated recycling

facilities.

## **Contact Information for Further Support**

For any inquiries or concerns regarding the LOCKNLOAD COMPARATOR INSERT, please reach out to your local retailer or manufacturer for assistance.

Thank you for your attention to these safety instructions. Your safety is our priority, and we hope you enjoy using the LOCKNLOAD COMPARATOR INSERT.

# About Us

## **Brownells Česká republika**

**Brownells - World's Largest Supplier of Gun Parts, Gunsmith Tools & Shooting Accessories**

[www.brownells.cz](http://www.brownells.cz)