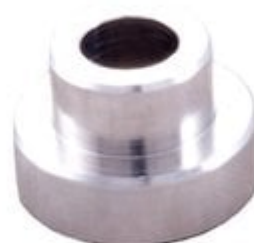


# LOCK-N-LOAD COMPARATOR INSERT - 270 CALIBER BULLET COMPARATOR INSERT

[Reloading](#) > [Measuring Tools](#) > [Bullet Comparators](#)

The Stoney Point Chamber-All Bullet Comparator body attaches to the blade of your caliper with a small thumbscrew and utilizes inserts for each caliber. The design of this tool allows proper alignment when used with the stoney Point Chamber-All OAL gauge (offset position), or it can be used in a conventional centerline method. Inserts are sold separately, or the tool can be purchased with six inserts as a kit. The body can also be used with to hold the Stoney Point headspace gage inserts.



## Attributes

- Name: [270 CALIBER BULLET COMPARATOR INSERT](#)
- Manufacturer: [HORNADY](#)
- Product no.: 749000506
- Mfr. No.: 627
- Caliber: 270/6.8 mm (.277)
- Delivery weight: 0.032kg
- Shipping height: 15mm
- Shipping width: 46mm
- Shipping length: 76mm
- UPC: 090255704310

## Item details

Made in USA

# Table of Contents

- [Startpage](#)
- [LOCKNLOAD COMPARATOR INSERT 270 CALIBER BULLET COMPARATOR INSERT Safety Instructions](#)
- [About Us](#)

# LOCKNLOAD COMPARATOR INSERT 270 CALIBER BULLET COMPARATOR INSERT Safety Instructions

## Introduction

Thank you for choosing the LOCKNLOAD COMPARATOR INSERT 270 CALIBER BULLET COMPARATOR INSERT. This guide provides essential safety instructions and guidelines to ensure the safe use of this product. Please read this document carefully before using the product.

## General Safety Guidelines

- Ensure that all users read and understand these safety instructions.
- Always use the product in accordance with the manufacturer's guidelines.
- Keep the product out of reach of children and vulnerable individuals.
- Report any unsafe products or incidents to the appropriate authorities.
- Check for recall updates on the EU's Safety Gate platform regularly.

## Specific Safety Precautions for Use

- **Potential Hazards:**
  - Improper use may lead to misalignment and inaccurate measurements.
  - The tool contains small parts that could pose a choking hazard if swallowed.
- **Avoiding Hazards:**
  - Always ensure the comparator is securely attached to the caliper before use.
  - Do not attempt to modify the tool or its components.
  - Use the product only for its intended purpose as described in this guide.

## Instructions for Installation and Usage

1. **Installation:**
  - Attach the body of the comparator to the blade of your caliper using the small thumbscrew.
  - Ensure that the attachment is secure and stable before proceeding.
2. **Using the Comparator:**
  - Select the appropriate insert for the 270 caliber.
  - Align the comparator with the bullet or case being measured.
  - For use with the Stoney Point ChamberAll OAL gauge, ensure the tool is in the offset position.
  - Alternatively, you can use the comparator in a conventional centerline method.
3. **Maintenance:**
  - Regularly check the condition of the comparator and inserts for wear or damage.
  - Clean the tool with a soft cloth to remove any debris or residue after use.

## Disposal Instructions

- Dispose of the product and any packaging materials in accordance with local regulations.
- Do not dispose of the product in household waste. Check for local recycling programs or hazardous waste disposal options.

## Contact Information for Further Support

For any safety inquiries or support related to the LOCKNLOAD COMPARATOR INSERT, please refer to your local retailer or the manufacturer's website for assistance.

# About Us

## Brownells Česká republika

**Brownells - World's Largest Supplier of Gun Parts, Gunsmith Tools & Shooting Accessories**

[www.brownells.cz](http://www.brownells.cz)