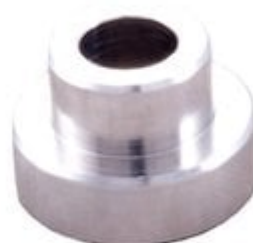


LOCK-N-LOAD COMPARATOR INSERT - 375 CALIBER BULLET COMPARATOR INSERT

[Reloading](#) > [Measuring Tools](#) > [Bullet Comparators](#)

The Stoney Point Chamber-All Bullet Comparator body attaches to the blade of your caliper with a small thumbscrew and utilizes inserts for each caliber. The design of this tool allows proper alignment when used with the stoney Point Chamber-All OAL gauge (offset position), or it can be used in a conventional centerline method. Inserts are sold separately, or the tool can be purchased with six inserts as a kit. The body can also be used with to hold the Stoney Point headspace gage inserts.



Attributes

- Name: [375 CALIBER BULLET COMPARATOR INSERT](#)
- Manufacturer: [HORNADY](#)
- Product no.: 749000494
- Mfr. No.: 1137
- Caliber: 375 Caliber (.375)
- Delivery weight: 0.032kg
- Shipping height: 13mm
- Shipping width: 41mm
- Shipping length: 69mm
- UPC: 090255704556

Item details

Made in USA

Table of Contents

- [Startpage](#)
- [LOCKNLOAD COMPARATOR INSERT 375 CALIBER BULLET COMPARATOR INSERT Safety Instructions](#)
- [About Us](#)

LOCKNLOAD COMPARATOR INSERT 375 CALIBER BULLET COMPARATOR INSERT Safety Instructions

Introduction

Thank you for choosing the LOCKNLOAD COMPARATOR INSERT 375 CALIBER BULLET COMPARATOR INSERT. This product is designed to provide precise measurements for bullet comparison. To ensure your safety and the optimal performance of this tool, please read and follow these safety instructions carefully.

General Safety Guidelines

- Ensure the product is used in accordance with the manufacturer's instructions.
- Always inspect the comparator and inserts for damage before use. Do not use if any parts are broken or worn.
- Keep the comparator and inserts out of reach of children and pets to prevent accidental injury or misuse.
- Use the comparator only for its intended purpose; do not attempt to modify or adapt it for other uses.
- If you experience any issues or concerns while using the product, stop using it immediately and seek assistance.

Specific Safety Precautions for Use

- When attaching the comparator to your caliper, ensure that the thumbscrew is securely tightened to prevent accidental detachment.
- Avoid using excessive force when measuring to prevent damage to the tool or inaccurate readings.
- Use caution when handling sharp objects, such as the caliper blade and inserts, to avoid cuts or injuries.
- Do not operate the comparator in wet or damp conditions, as this may affect its performance and safety.
- Always store the comparator and inserts in a dry place to maintain their condition and functionality.

Instructions for Installation and Usage

1. Attaching the Comparator:

- Locate the thumbscrew on the body of the LOCKNLOAD COMPARATOR.
- Align the comparator body with the blade of your caliper.
- Securely tighten the thumbscrew to hold the comparator in place.

2. Using the Inserts:

- Choose the appropriate insert for the caliber you are measuring. Inserts are sold separately or may be included in a kit.
- Slide the insert into the comparator body until it is fully seated.
- Ensure that the insert is properly aligned for accurate measurement.

3. Measuring with the Comparator:

- Position the caliper with the comparator and insert against the bullet you want to measure.
- Gently close the caliper until it makes contact with the bullet.
- Read the measurement displayed on the caliper for precise bullet comparison.

4. Using with OAL Gauge:

- For use with the Stoney Point ChamberAll OAL gauge, ensure that the comparator is in the offset position.

- Follow the same steps for attaching and using the comparator as outlined above.

Disposal Instructions

- Dispose of the LOCKNLOAD COMPARATOR INSERT and any inserts in accordance with local regulations.
- Do not dispose of the product in household waste. Check for recycling options or take it to a designated disposal facility.

Contact Information for Further Support

For any questions or concerns regarding the LOCKNLOAD COMPARATOR INSERT, please contact your local retailer or the manufacturer for assistance. Ensure you have the product details available for reference.

By following these guidelines, you can ensure a safe and effective experience with your LOCKNLOAD COMPARATOR INSERT 375 CALIBER BULLET COMPARATOR INSERT. Thank you for your attention to safety, and enjoy using your new tool!

About Us

Brownells Česká republika

Brownells - World's Largest Supplier of Gun Parts, Gunsmith Tools & Shooting Accessories

www.brownells.cz