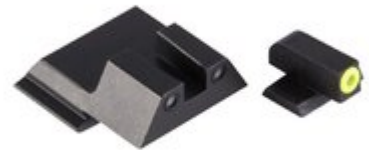


PERFECT DOT TRITIUM NIGHT SIGHTS FOR SMITH & WESSON - NIGHT FISION S&W M&P SHIELD YELLOW FRONT & BLACK SQUARE NOTCH REAR

[Handgun Parts](#) > [Sights](#) > [Sight Sets](#)

Set Up the Perfect Sight Configuration for Your S&W Pistol

PERFECT DOT TRITIUM NIGHT SIGHTS FOR SMITH & WESSON® The Tritium front dots on Night Fision's Perfect Dot night sights for Smith & Wesson M&P® pistols are 30% than standard dots. That translates to 30% BRIGHTER front sights! Contrasted against the plain black rear sight, that bright front dot encourages a fast, instinctive "Front Sight Focus" that helps you keep your eyes on the target. The Tritium insert isn't surrounded by the typical painted-on ring, but rather one made of a daylight fluorescing material that produces optimum visibility in daylight. The result is what the Night Fision folks have dubbed the "Perfect Dot". Provides maximum visibility in both nighttime AND daylight conditions, so when the pressure is on, you'll locate your M&P's sights quickly - and get them on target fast. Features Robust machined 4140 steel sight bodies - far stronger than the factory plastic Matte black Nitride finish - excellent wear- and corrosion-resistance Tritium vial has extra protection from knocks & dings Sold as front/rear pairs only Night Fision Perfect Dot night sights for Smith & Wesson® pistols are available in two models: one for 9mm/.40 S&W chambered M&P, M&P M2.0, SD9 VE and SD40 VE pistols; the other model fits the M&P Shield in 9mm/.40/.45 ACP. Features a notch on the plain black rear sight, with a choice Orange Tritium front dot.



Attributes

- Name: [NIGHT FISION S&W M&P SHIELD YELLOW FRONT & BLACK SQUARE NOTCH REAR](#)
- Manufacturer: [NIGHT FISION](#)
- Product no.: 100029985
- Mfr. No.: SAW-202-003-YGZG
- Model: M&P Shield
- Sight Color: Yellow/Black
- Style: Night Sights
- Weapon type: Smith & Wesson
- Delivery weight: 0.032kg
- Shipping height: 25mm
- Shipping width: 114mm
- Shipping length: 178mm
- UPC: 810116030989

Item details

Made in USA

Table of Contents

- [Startpage](#)
- [Safety Instruction Guide for Perfect Dot Tritium Night Sights for Smith & Wesson](#)
- [About Us](#)

Safety Instruction Guide for Perfect Dot Tritium Night Sights for Smith & Wesson

Introduction

Thank you for choosing the Perfect Dot Tritium Night Sights for your Smith & Wesson M&P Shield. This guide provides essential safety instructions and usage information to ensure you use the product safely and effectively. Please read this guide carefully before installation and use.

General Safety Guidelines

- Ensure the product is suitable for your specific firearm model.
- Always handle firearms with care and follow the manufacturer's safety instructions.
- Keep the night sights out of reach of children and vulnerable individuals.
- Regularly inspect the night sights for any signs of damage or wear.
- If the night sights become damaged, discontinue use immediately and replace them.

Specific Safety Precautions for Use

- The Tritium inserts provide illumination in lowlight conditions. However, they do not replace the need for proper lighting when aiming.
- Avoid exposing the night sights to extreme temperatures or harsh chemicals, which may affect functionality.
- When cleaning your firearm, do not use abrasive materials that may scratch the night sights.
- Ensure that the sights are properly aligned before use to maintain accuracy.

Instructions for Installation and Usage

1. Installation:

- Ensure your firearm is unloaded and safe to handle.
- Remove the existing sights according to your firearm's manual.
- Carefully install the Perfect Dot Tritium Night Sights, ensuring the front sight is positioned correctly.
- Secure the sights according to the manufacturer's specifications.
- Confirm that the sights are firmly attached and aligned.

2. Usage:

- When aiming, focus on the bright Tritium front dot for improved target acquisition.
- Practice using the sights in various lighting conditions to become familiar with their performance.
- Regularly check the alignment and condition of the sights, especially after extended use.

Disposal Instructions

- Dispose of any damaged or worn night sights in accordance with local regulations regarding hazardous materials.
- Do not dispose of night sights in regular household waste. Contact your local waste management facility for guidance.

Contact Information for Further Support

For any inquiries or concerns regarding the Perfect Dot Tritium Night Sights, please refer to the manufacturer's contact information provided with your product packaging or on the official website.

Conclusion

By following these safety instructions, you can ensure a safe and effective experience with your Perfect Dot Tritium Night Sights. Always prioritize safety and seek assistance if you have any questions or concerns. Thank you for your attention to safety.

About Us

Brownells UK

Brownells UK - World's Largest Supplier of Gun Parts, Gunsmith Tools & Shooting Accessories

Unit 1, Laughing Dog Industrial Estate
London Road
Rugby
Warwickshire
CV23 9LP

www.brownells.co.uk